

BORIS Portal

Research Data, Projects & Funding

Open Science, University library of Bern

BORIS Portal Overview

Introduction to

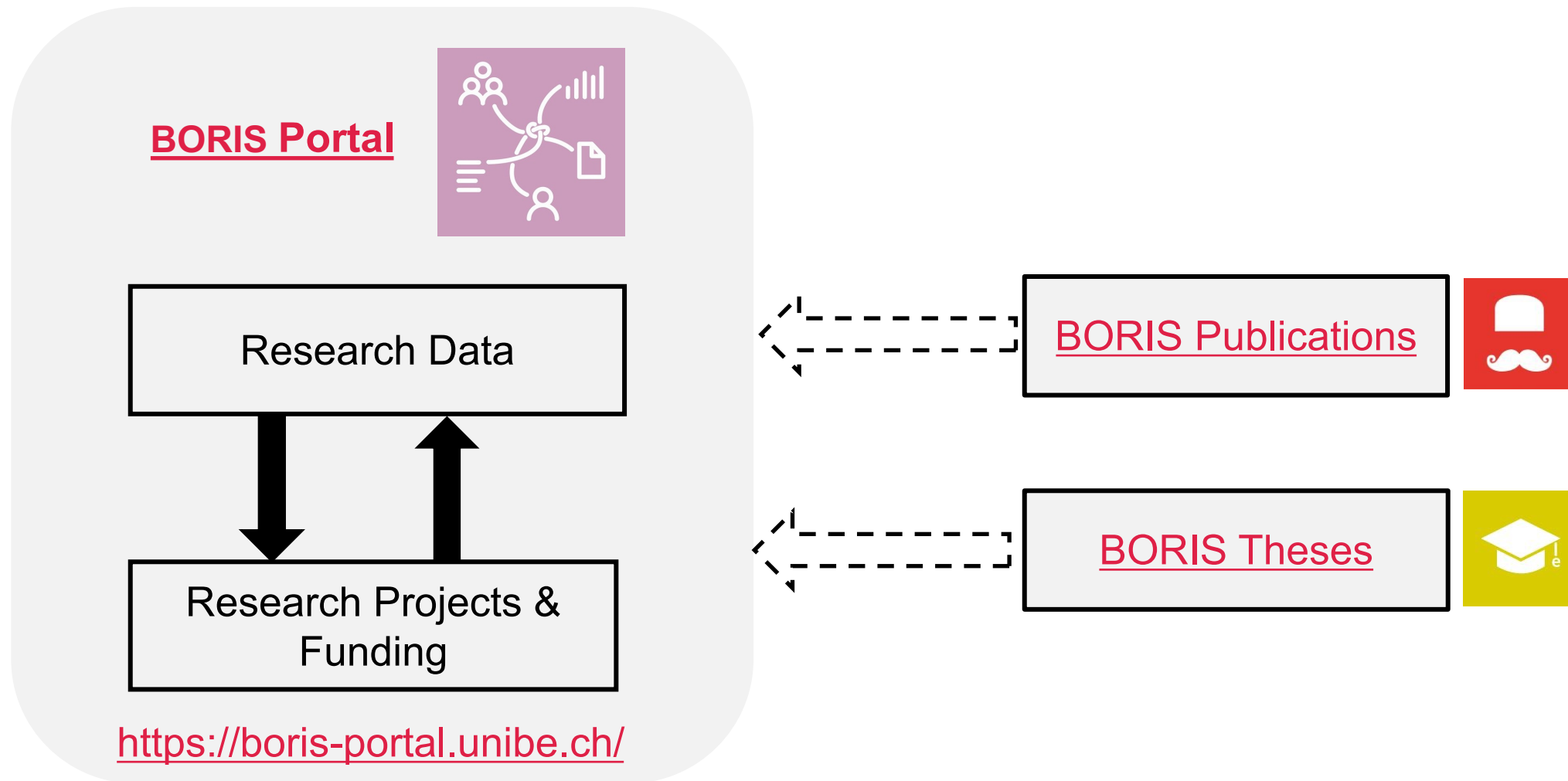
- > project collection of the University of Bern
- > research data repository for researchers at Bern University

Subsequently do a

- > question round
- > live demo



BORIS Portal Overview



BORIS Portal and BORIS Publications

<https://boris-portal.unibe.ch/>

BORIS Portal

Bern Open Repository and Information System



Last added



Tweets von @BORIS_UniBe

Reducing the noise of fiber supercontinuum sources to its limits by exploiting cascaded soliton and wave-breaking nonlinear dynamics [Dataset]

👤 👤 👤 Sierro, Benoît Guy Alain ; Hänzi, Pascal Manuel ; Spangenberg, Dirk-Mathys ;

👤 👤 Rampur, Anupamaa ; Heidt, Alexander

Type Dataset

Data "La identidad mexicana en libros escolares y narrativas"

👤 García, Alba Nalleli

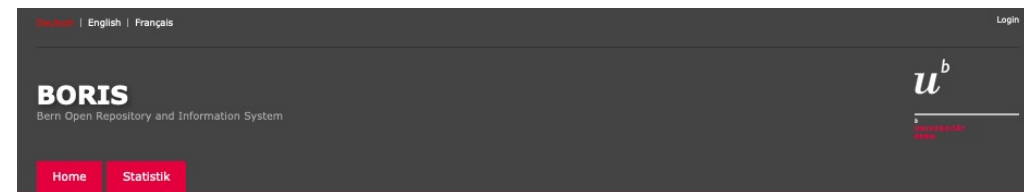
Type Dataset

Short-term fasting attenuates overall steroid hormone biosynthesis in healthy young women

👤 Flück Pandey, Christa Emma

Type Dataset

<https://boris.unibe.ch/>

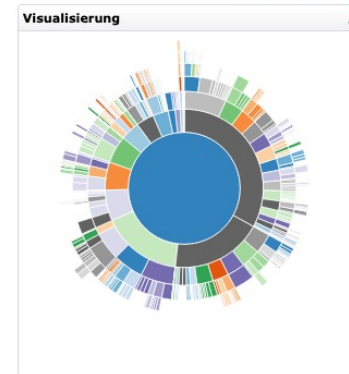
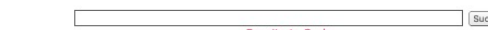


Hinweis für die Mitarbeitenden der Universität Bern

Ab 15. April 2021 wird die SWITCH edu-ID die SWITCHaai-Authentifizierung ersetzen. Sie sollten daher so bald wie möglich Ihren Campus Account mit Ihrer bestehenden SWITCH edu-ID verknüpfen oder aber zuerst ein solches Konto erstellen.

Mehr Informationen finden Sie unter: eduid.unibe.ch

- Browsen nach
- Institut
- AutorIn
- AutorIn Bern
- Jahr
- Info
- FAQ
- Anleitung
- Über BORIS



News
Tweets by [opencesciencebern](#)

Neueste Einträge

1. Schreier, Gero; Churakova, Olga; Lössli, Ursula; Morger, Jennifer; Verdicchio, Dirk (2022). *BORIS Portal. A current research information system and its role for the reusability of datasets*. In: IDCC 22 -- 17th International Digital Curation Conference. online. 13-16 June 2022.
2. Oehrl, Dominique; Stadelmann-Steffen, Isabelle; Lütolf, Meret (2022). *How Does the Provision of Childcare Services Affect Mothers' Employment Intentions? Empirical Evidence from a Conjoint Experiment*. *Journal of social policy*, S. 1-20. Cambridge University Press 10.1017/S0047279422000423
3. Ackermann, Kathrin; Stadelmann-Steffen, Isabelle (2022). *Voting in the Echo Chamber? Patterns of Political Online Activities and Voting Behavior in Switzerland*. *Swiss political science review* 10.1111/spsr.12498

BORIS Portal: Projects and Funding

What are the goals?

- > Document a research project
- > Share the information with project partners
- > Keep record of the research process
- > Improve visibility of research outputs

BORIS Portal: Projects and Funding

What does it contain?

Information about research projects:

- > Contributors: principle investigators, researchers and contact person
- > Project title and abstract
- > Involved organizations
- > Relations: other projects, data, publications

Information about funding:

- > Funders
- > Project duration
- > Grant number and grant amount



© Universität Bern

BORIS Portal: Projects and Funding

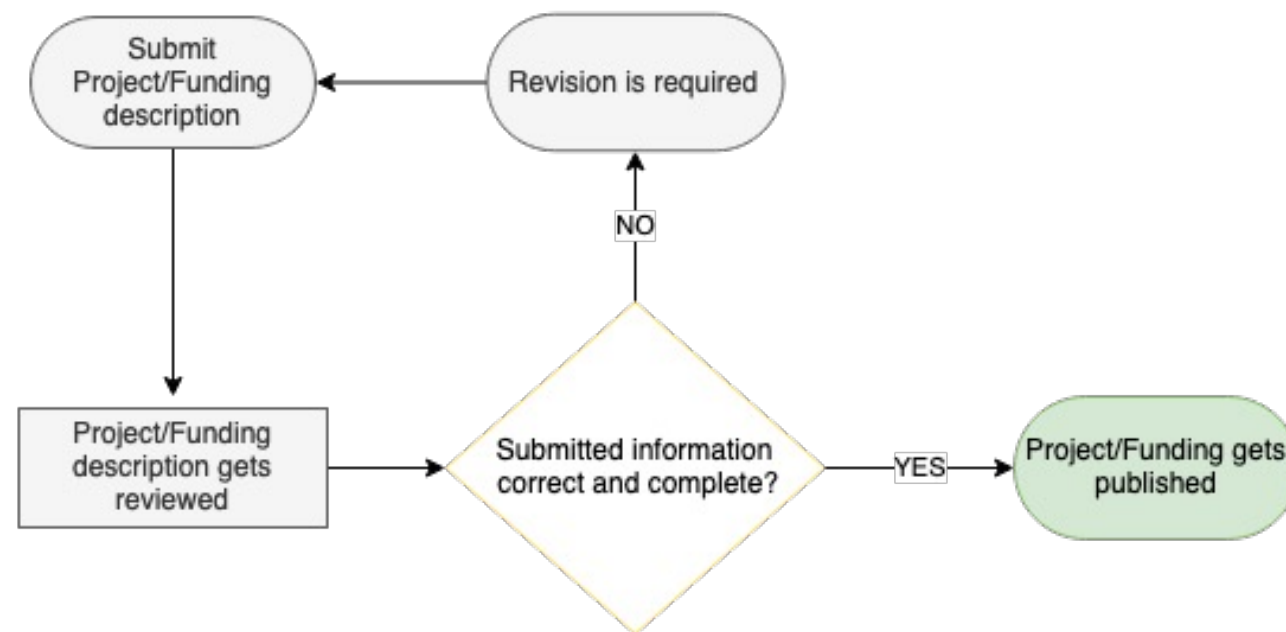
What are the benefits?

- > Helps to document project information and research data outputs
- > Bundles information about internal, national and international research collaborations
- > Enables you to share your research information with project partners
- > Connects your research information with your research output
- > Increases the visibility of your research for economy and society

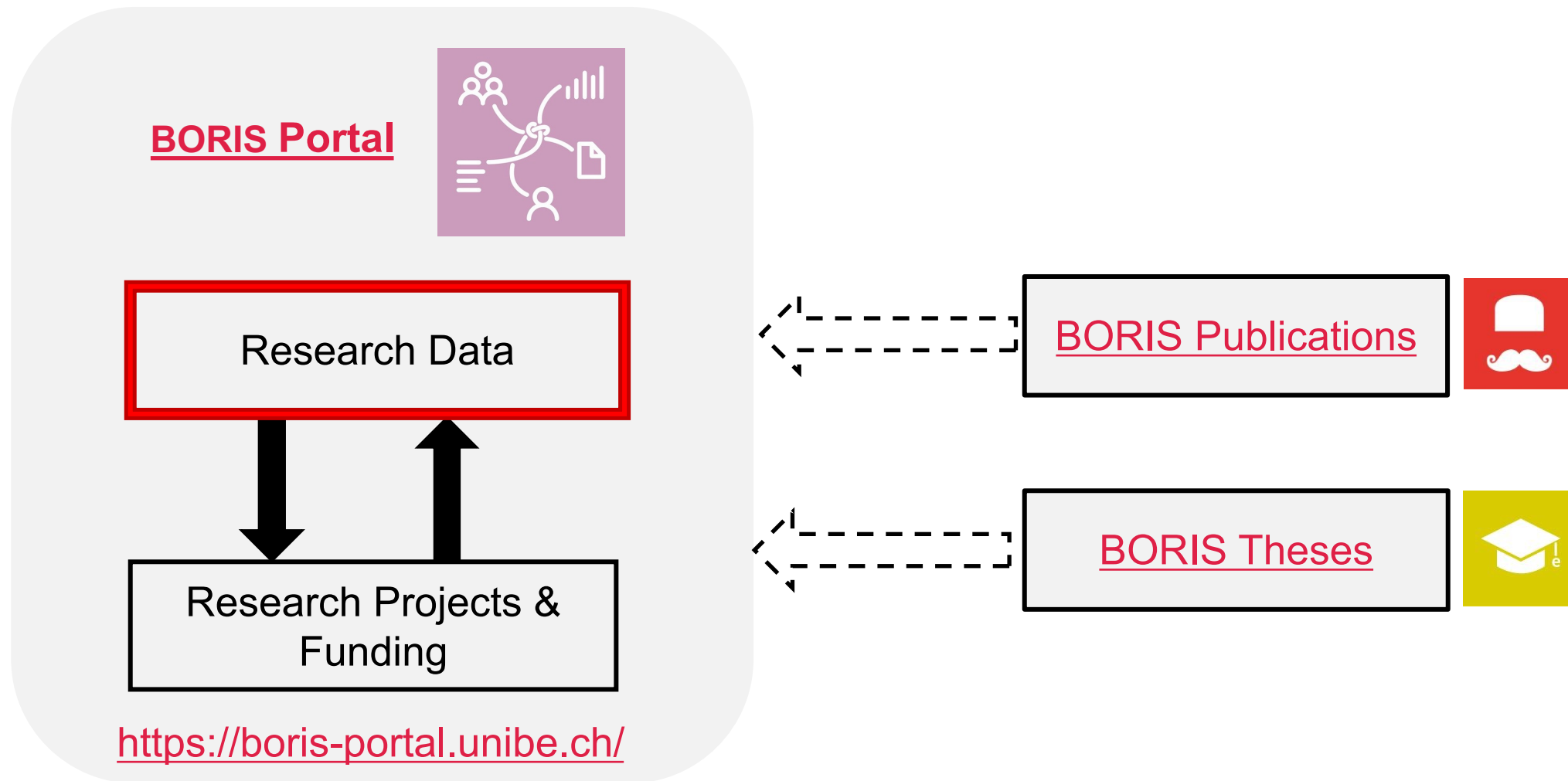
BORIS Portal: Projects and Funding Workflow

BORIS Portal Team

- > checks submissions **for formal criteria**
- > no content review
- > provides support to submitters
- > borisportal@ub.unibe.ch



BORIS Portal Overview



BORIS Portal: Research Data

What is it?

- > Institutional Research Data repository of Bern University
- > Upload research data and documentation
- > Share research data world-wide
- > Manage access to data
- > Can be used independently from Boris Portal Projects

BORIS Portal: Research Data

Technical characteristic

Availability and Cost

- > Open for all researchers at UniBE & Inselspital
- > Free to use for up to 1 TB per year / person
- > Individual solutions for larger amounts of data

Security and Trust

- > Part of the IT system of UniBE
- > No upload of sensitive data

BORIS Portal: Research Data Managing Access

Open

Open access to dataset.

Metadata and documentation are always CC0.

Embargoed

Enter date after which dataset will be released.

Restricted

Upload dataset and grant access on request.

Closed

No data upload, but meta-data can be entered to verify existence of dataset.

Data Transfer Agreement

- recommended for data that cannot be shared openly
- individually define re-use conditions for dataset
- share DTA along with data for others to download and sign

BORIS Portal: Research Data FAIR Data

- > Findable, Accessible, Interoperable, Reusable
- > Good practice for data sharing
- > Essential for complying with requirements of funders (EU, SNSF)
- > Sensitive data can be under restricted/closed access and still be FAIR!

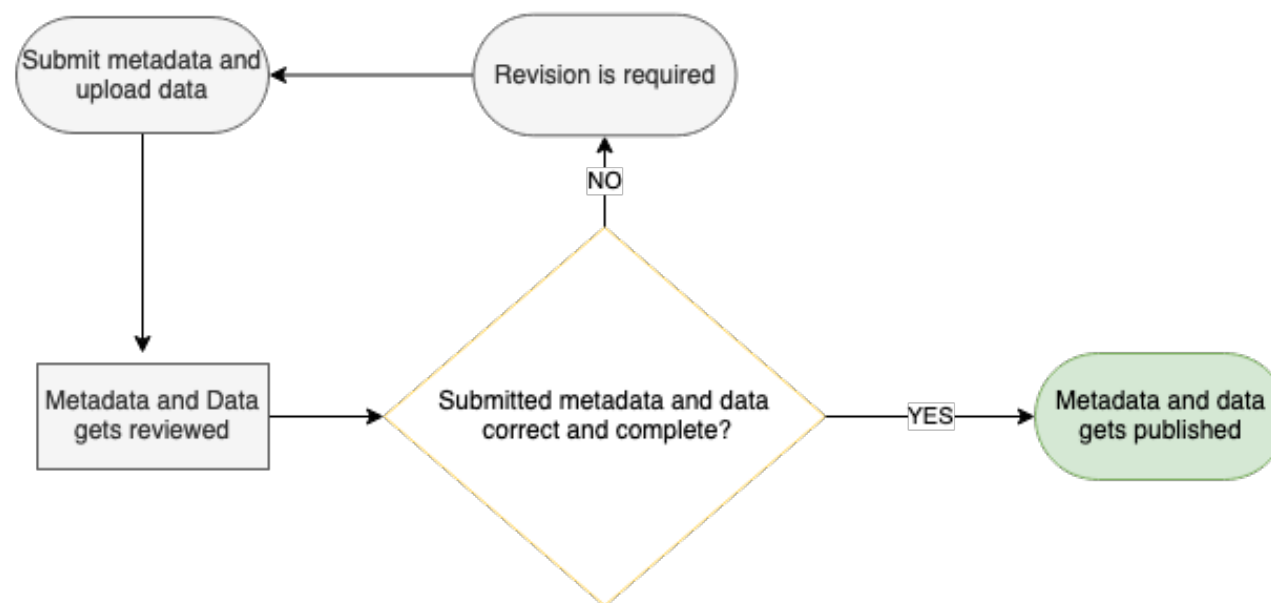
BORIS Portal

- ✓ DOI for datasets
- ✓ Describe data with metadata
- ✓ Metadata standard: Dublin Core
- ✓ Metadata always openly accessible ([CC0](#))
- ✓ Upload documentation
- ✓ Data access management
- ✓ Licensing: Creative Commons, software licenses, custom licenses
- ✓ Longterm preservation policy (at least 10 years)

BORIS Portal: Research Data Workflow

BORIS Portal Team

- > checks research data submissions **according to formal criteria** (valid file format and layout, exclusion of spam) before release
- > no content review
- > provides support to submitters
- > borisportal@ub.unibe.ch



BORIS Portal: Research Data

Why use it?

- > Share research data with the community world-wide
- > Comply with funder requirements (SNSF, EU)
- > Manage access to data
- > Link research data to publications and project information
- > Non-commercial
- > Individual support and review from OS team

BORIS Portal

Any questions so far?

BORIS Portal

What are we working on?

- > Migration of publications and thesis
- > Enable a workflow of sharing your information and documents with the administrative units of the university
- > Enable to synchronize the information on your UniBE-websites

BORIS Portal

Thank you for your feedback!

What is your opinion on BORIS Portal?
Do you miss a feature?
Please let us know!

<https://bit.ly/3oQyath>



Get in touch!



E-Mail: openscience@unibe.ch

Newsletter: www.unibe.ch/ub/osnews

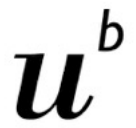
Blog: <https://biblio.unibe.ch/bosb>

Workshops: http://bib.unibe.ch/openscience_support

Twitter: [@opensciencebern](https://twitter.com/opensciencebern)

www.unibe.ch/ub/openscience

BORIS Portal



^b
UNIVERSITÄT
BERN

In detail – follow along

Thanks for your attention

Bern University Library, Open Science

borisportal@ub.unibe.ch

