

CAS

Natural Language Processing



Artificial Intelligence for Languages

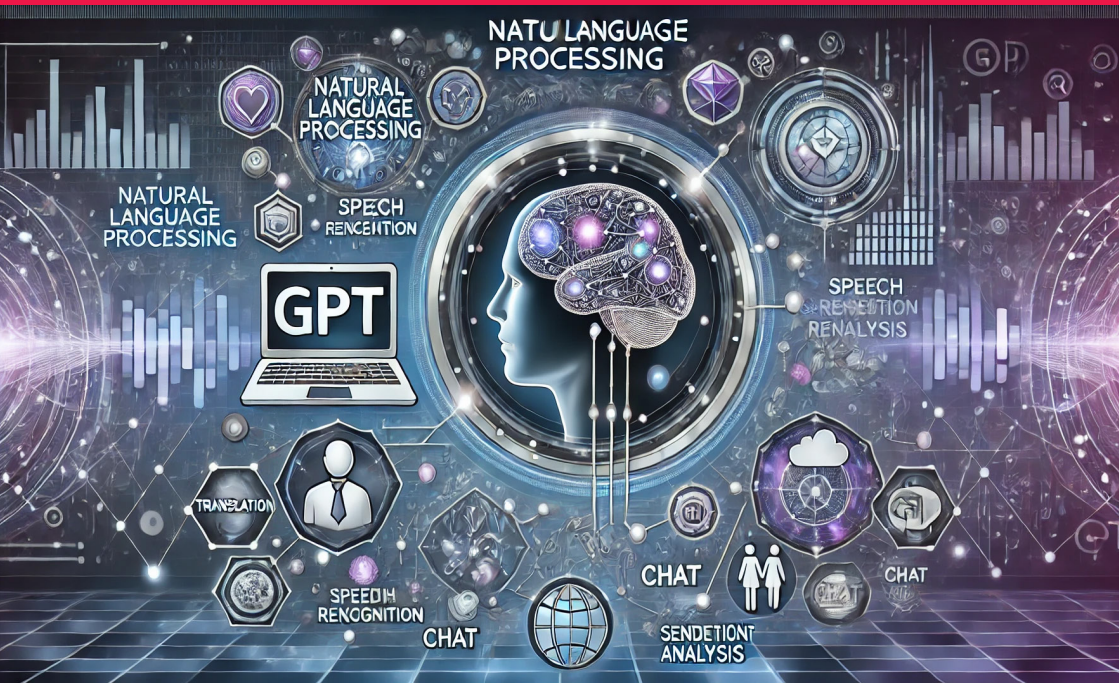




Table of Contents

2	Introduction
4	Target groups
5	Objectives
6	Key figures
7	Modules
8	Final project
9	Cost and Registration
10	Schedule 2025/2026
11	Contact
12	Continuing Education in Extended Intelligence

Natural Language Processing AI.



Introduction

From translating languages and answering questions to pulling out key information and even generating text, Natural Language Processing (NLP), especially NLP algorithms e.g. ChatGPT and others, are already a big part of our daily lives. But the latest advances in NLP, powered by cutting-edge models, go far beyond these familiar uses. These breakthroughs are opening up entirely new possibilities for how we interact with technology—hinting at systems that might one day understand meaning or even mimic aspects of human thought.

NLP is a fascinating field at the crossroads of language studies, artificial intelligence, and computer science. Thanks to deep learning techniques, tools in this area are now performing so well that they're transforming how we handle anything involving natural languages.

Our program dives into this exciting field, offering six modules between August and January. It's designed for professionals who want an overview of the NLP domain with focus on recent developments (like deep learning models) and who want to learn how to apply useful tools. Programming skills, machine learning experiences and mathematical background are not required as we offer a free preliminary course in Python and one in Mathematical Methods. The difficulty is at a university master level and assumes a higher education degree.



«When I was young, I found out that the big toe always ends up making a hole in a sock. So I stopped wearing socks.»

ALBERT EINSTEIN



Target Groups

Aimed at students and professionals from the public/private sector that hold a degree from a university or a university of applied sciences (e.g. BSc, MSc, PhD).

Are you a journalist, author, librarian, linguist, translator, lawyer, social media expert, media and communications specialist or similar? Then this CAS NLP is definitely for you!

SUITABLE AND INTENDED FOR PRACTITIONERS AND RESEARCHERS:

Gain an overview of the Natural Language Processing domain with a focus on recent developments (deep learning models) and hands-on learning. Learn the techniques behind e.g. ChatGPT and the tools for processing language & text with Artificial Intelligence.

Standard data sets are provided, but participants are encouraged to bring or acquire their own. Programming skills, machine learning experiences and mathematical background are not required as we offer a free preliminary course in Python. If you have any questions regarding whether this program could work for you, please do not hesitate to contact us.



Objectives

Course competence is developed throughout six modules and a CAS project work. On completion, the graduates will

Have an overview of the NLP domain and common applications

Be able to perform relevant preprocessing tasks needed for advanced NLP

Be able to understand neural networks and practice them on their own NLP applications

Be able to understand transformers and practice transfer learning with transformers for their own applications

Know discussions related to philosophical and ethical aspects around NLP and artificial intelligence

Be familiar with active research in the NLP domain

CAS Natural Language Processing

Summary

CAS Natural Language Processing

Degree
Certificate of Advanced Studies in
Natural Language Processing NLP
University of Bern (CAS NLP Unibe)

Scope
16 ECTS

Duration
2025-08 - 2026-07
(2 years is possible)

Start
2025-08

Admission
A degree from an university or an
university of applied sciences

Cycle
Annual

Language
English

Further information
www.unibe.ch/continuing_education_programs/cas_natural_language_processing

Locations

All courses take place in walking distance from the Bern railway station. The exception is Module 3 which takes place in Italy at Lago Maggiore and Module 6, which takes place in the ski resort Mürren two train hours from Bern city.

All courses are additionally held online. Remote participation is possible (via Zoom).

Teaching methods

Our teaching methods are modern and peer oriented. The modules use online platforms with multimedia materials, tutorials and assessments to aid learning, along with classes for discussion, feedback and a chance to deepen knowledge. Main tool and language is Python.

Workload

The duration of all modules corresponds to approximately 20 classroom hours each and module work (expected effort is 30 hours), with each complete module qualifying for 2 ECTS points. The expected workload for the final CAS Project (4 ECTS) is 120 hours.





Modules

Module 1

NLP Fundamentals

In this module, linguistics and machine learning concepts are introduced and an overview of the NLP field and common applications is given.

Module 2

Preprocessing and basic analysis

In this module, participants learn to perform basic preprocessing and analysis of natural language.

Module 3

Neural networks

In this module, participants learn how neural networks work, are trained, tuned, assessed and applied for NLP tasks

Module 4

Transformers

In this module, participants study transformers and learn why they have changed the NLP field.

Module 5

Philosophical and ethical aspects of NLP

In this module, participants study and discuss ethical and philosophical aspects related to machines being capable of natural language processing.

Module 6

Frontier and applications

This module consolidates the knowledge obtained from previous modules to focus on prominent NLP topics and applications.

Final Project

CAS Thesis

Consolidate all gained knowledge in your final CAS Project. Team work and usage of own data are encouraged.



PD. DR. SIGVE HAUG

Data Science Lab, University of Bern

«Enormous amounts of data live in the format of natural languages. Access to that data by automatic natural language processing therefore represents a not estimable potential for almost all domains.»

Final Project

Participants define and perform a 4 ECTS project work, individually or in teams during the CAS. Support is provided by the CAS lecturers. Output is a report, computational notebooks and a presentation. The use of own data from profession or research is encouraged.



To check if registration
is currently possible,
visit



Cost

Regular CAS program: CHF 9600

Employees and students of
University of Bern: CHF 5600

Inclusive of all modules, performance assessments, certificates, materials and teaching platforms, coffee breaks, full pension hotel (Module 3), full pension hotel in Mürren (Module 6) and diploma apero.

Participants must supply their own laptops.

Registration

Register via https://www.unibe.ch/continuing_education_programs/cas_natural_language_processing

Registration opens in December and a maximum of 20 registrations can be accepted each year. Registrations are processed in the order of arrival. The CAS can only be offered if there are sufficient registrations by the deadline.

Registered participants will receive acceptance confirmation by email and will be invited to one of the next Introduction events. Attendance to one Introduction is mandatory. Participants can cancel their registrations before the deadline without any costs. After the deadline the regulations apply. Individual modules and electives can be attended before the registration.

Schedule

2025/2026

Module 1	NLP Fundamentals	2025-08-19 - 2025-08-22
Module 2	Preprocessing and basic analysis	2025-08-26 - 2025-08-29
Module 3	Neural networks	2025-10-06 - 2025-10-10
Module 4	Transformers	Every Friday from 2025-10-17 until 2025-12-12
Module 5	Philosophical and ethical aspects	Every Friday from 2025-10-17 until 2025-12-12
Module 6	Frontier and applications	2026-01-26 - 2026-01-30

Further introductory courses:

Algorithms and programming are important tools in data driven research. Python is a good scripting language widely used to make pipelines of tasks typical for large computations and analysis on large datasets. It suits the purpose of starting programming in it, as well.

For students who wish to refresh their Python programming knowledge or who are new to the Python programming language, we recommend attending the course

Introduction to Programming (Python)
on 2025-08-11.



CONTACT



PD Dr. Sigve Haug
Director of Studies
sigve.haug@unibe.ch



Claire Dove
Education and
Communication Manager
claire.dove@unibe.ch

Lecturers

Our lecturers are local or external experts. Currently, lecturers include

- Prof. Dr. Dr. Claus Beisbart
- Prof. Dr. Tobias Hodel
- Dr. des. Christa Schneider
- PD Dr. Sigve Haug
- Dr. Kinga Sipos
- Dr. Mykhailo Vladymyrov
- Dr. Sukanya Nath

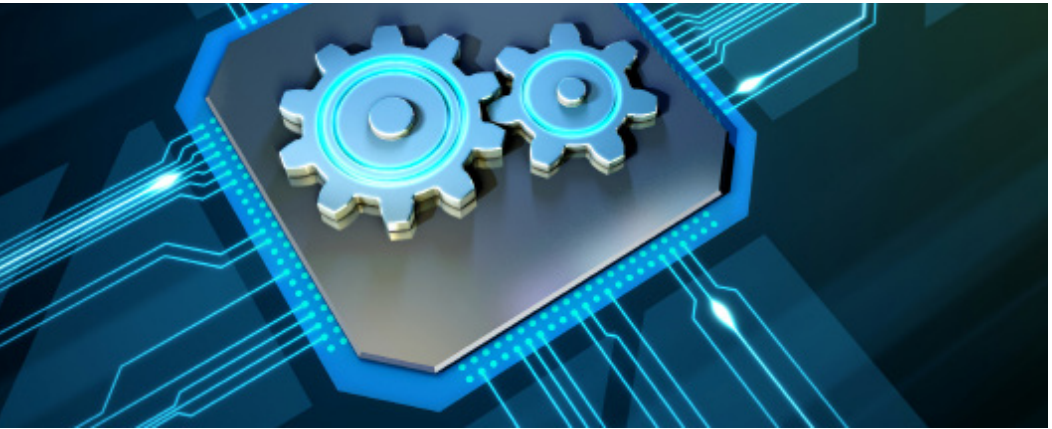
Program management

The Certificate of Advanced Studies (CAS) in Natural Language Processing (NLP) is offered by the Mathematical Institute in Continuing Education.

- Prof. Dr. Paolo Favaro
- Prof. Dr. Jan Draisma
- Prof. Dr. Tobias Hodel
- PD Dr. Sigve Haug (Director of Studies)
- Prof. Dr. Christiane Tretter
- Prof. Dr. Thomas Wihler (Chair)



Further Studies: Extended Intelligence



DAS Extended Intelligence

The CAS Natural Language Processing (NLP) can be combined with the CAS Advanced Machine Learning (AML) into a Diploma of Advanced Studies in Extended Intelligence - the DAS XI. Instead of the CAS NLP one can choose the CAS Applied Data Science (ADS).

The scope of the DAS XI comprises 38 ECTS:

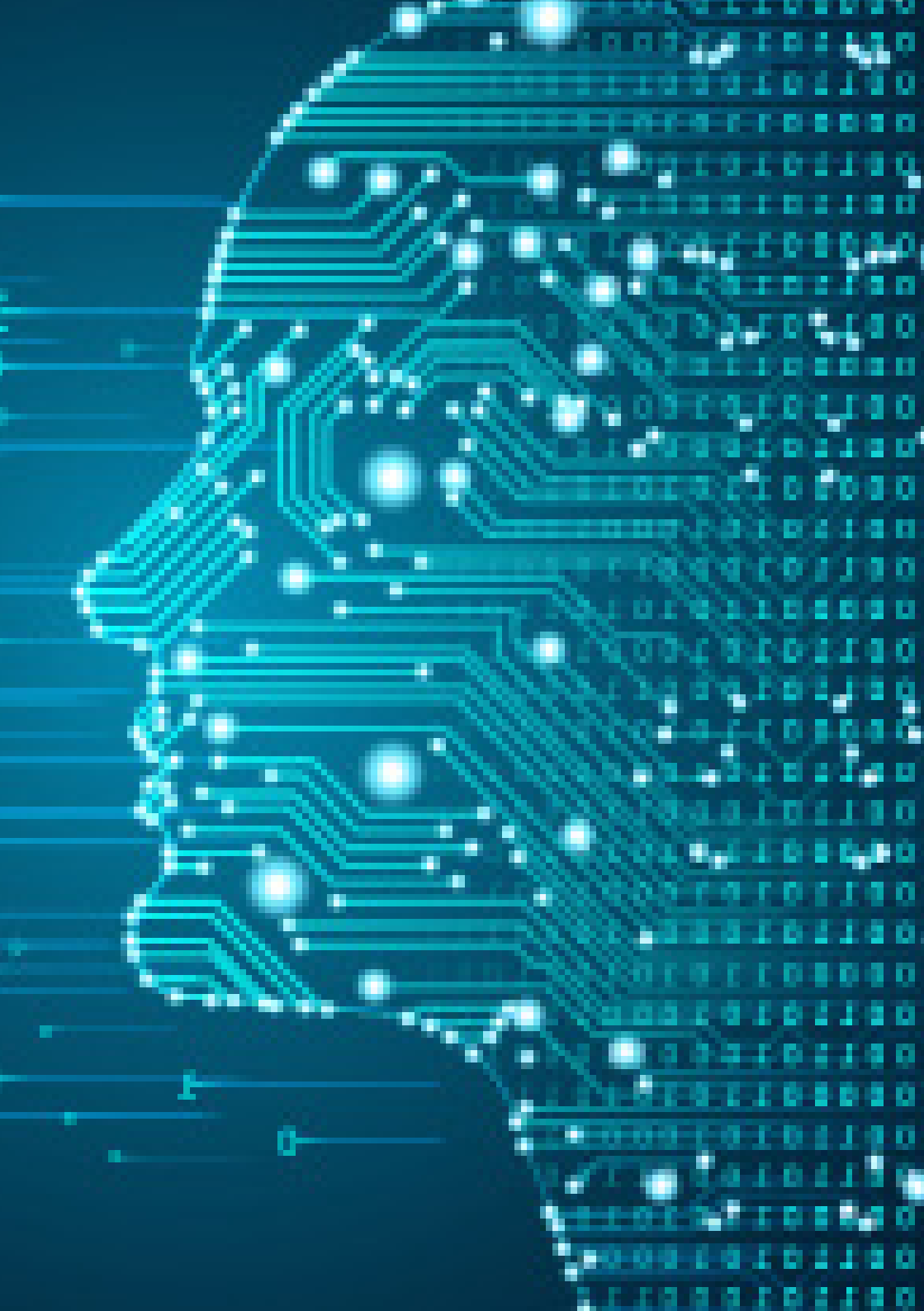
- 16 ECTS from CA AML
- 16 ECTS from CAS ADS/NLP
- 2 ECTS from DAS Module
- 4 ECTS from DAS Thesis

MAS Extended Intelligence

The CAS Natural Language Processing (NLP) can be combined with the CAS Advanced Machine Learning (AML) and the CAS Applied Data Science (ADS) into a Master of Advanced Studies in Extended Intelligence - the MAS XI.

The scope of the MAS XI comprises 62 ECTS:

- 16 ECTS from CAS AML
- 16 ECTS from CAS ADS/AICP/AI4T/ASDS/AI-MI
- 16 ECTS from CAS NLP/AICP/AI4T/ASDS/AI-MI
- 2 ECTS from MAS Module
- 12 ECTS from MAS Thesis





University of Bern
Mathematical Institute
Sidlerstrasse 5
3012 Bern
Schweiz

www.math.unibe.ch